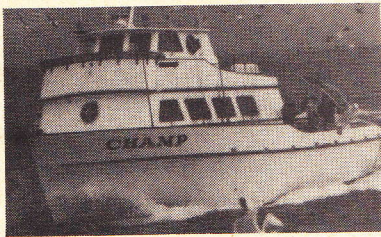


# The CHAMP



*A Champ in local and long-range fishing!*

Captain Joe Dunn & Captain Kevin Ward have a combined 40 years experience in local and Baja long range sportfishing. The crew is knowledgeable & professional. No crew fishing!

The Champ cruises at 12 knots and carries the latest in electronic navigation equipment. Spray brine fish hold, spacious modern galley, long range accommodations.

Available for local charters and Baja Long Range Sportfishing. Prime dates still available. (See Long Range schedule this page.)

For more information:

**222-1144 or 276-0819**

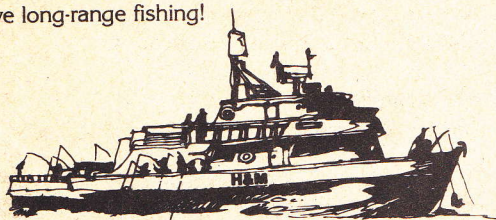
## INFLATION FIGHTING FARES

Advance bookings on Long Range Fishing trips this season can save you money and guarantee your fare with no increases and no fuel surcharge! \* **No Fare Increases!** \* **No Fuel Surcharge!** \* To qualify, reservations must be made and fare paid in full at least 45 days in advance.

# LISTA 100"

Captain John Pratt

putation as H&M's long-range sportfisher.  
ce! ★ No crew fishing!  
ons! ★ Fantastic Meals!  
n electronic equipment!  
uctive long-range fishing!



**(213) 626-8005**

ation & reservations **(714) 222-1144**

# Complete Long Range Schedule

## Finalista 100

Trip #	Depart/Return	# Days	Fare
F-5	Fr., 6/18 - Sa., 6/26	8	\$760
F-SA	Sa., 6/26 - Tu., 6/29	3	\$350
F-6	Fr., 7/2 - We., 7/7	5	\$550
F-8	Su., 7/11 - Th., 7/15	4	\$440
F-9	Th., 7/15 - Su., 7/18	3	\$330
F-10	Su., 7/18 - Fr., 7/23	5	Charter
F-11	Fr., 7/23 - Tu., 7/27	4	\$440
F-12	Tu., 7/27 - Th., 7/29	2	\$225
F-13	Mo., 8/2 - We., 8/4	2	\$220
F-14	We., 8/4 - Fr., 8/6	2	\$220
F-15	Mo., 8/9 - Fr., 8/13	4	\$440
F-16	Mo., 8/16 - Th., 8/19	3	\$330
F-17	Th., 8/19 - Su., 8/22	3	\$330
F-18	Su., 8/22 - Tu., 8/24	2	\$220
F-19	Tu., 8/24 - Fr., 8/27	3	\$330
F-20	Fr., 8/27 - Su., 8/29	2	\$220
F-21	Su., 8/29 - We., 9/1	3	\$330
F-28	Th., 11/4 - Su., 11/14	10	\$1,100

## Executive

Trip #	Depart/Return	# Days	Fare
E-7	Mo., 8/2 - Th., 8/5	3	\$375
E-8	Su., 8/8 - We., 8/11	3	\$375
E-9	Fr., 8/13 - We., 8/18	4½	\$515
E-10	Th., 8/19 - Su., 8/22	3	\$375
E-11	Mo., 8/23 - Fr., 8/27	4	\$495
E-12	Sa., 8/28 - Tu., 8/31	3	\$375
E-13	Tu., 9/7 - Su., 9/12	5	\$595
E-14	Sa., 9/18 - Mo., 9/27	9	\$990
E-15	Mo., 11/1 - Th., 11/11	10	\$1,190
E-16	Tu., 11/16 - Sa., 11/27	11	\$1,320
E-17	Th., 12/2 - Sa., 12/12	10	\$1,190



## Champ

Trip #	Depart/Return	# Days	Fare
C-136	Fr., 10/1 - Mo., 10/4	3	\$330
C-137	Fr., 10/22 - Sa., 10/30	8	\$880
C-138	Fr., 11/26 - We., 12/1	5	\$525
C-139	Fr., 12/3 - We., 12/8	5	\$525
C-140	Fr., 2/25 - We., 3/2	5	\$550
C-141	Tu., 4/12 - Su., 4/17	5	\$550
C-142	Fr., 5/13 - We., 5/18	5	\$550
C-143	Fr., 6/3 - We., 6/8	5	\$550

## Sea Venture

Trip #	Depart/Return	# Days	Fare
SV-6	Fr., 6/25 - We., 6/30	5	\$550
SV-7	Fr., 9/3 - Mo., 9/6	3	\$330
SV-8	Fr., 9/10 - Tu., 9/14	4	\$425
SV-9	Fr., 9/17 - We., 9/22	5	\$525
SV-10	Fr., 10/1 - We., 10/6	5	\$525
SV-11	Fr., 10/8 - Tu., 10/12	4	\$400
SV-12	Fr., 10/15 - We., 10/20	5	\$525
SV-13	Fr., 10/22 - We., 10/27	5	\$525
SV-14	Fr., 11/12 - We., 11/17	5	\$500
SV-15	Fr., 12/10 - we., 12/15	5	\$500

## RESERVATION CENTERS

The following tackle stores are authorized reservation centers for H & M Landing. They can assist you in making reservations on long range fishing trips. These stores have been individually chosen to represent us based on their experience and ability to assist and advise the long range fisherman.

### Cook's Landing and Sporting Goods

- Bear Tackle & Oasis
- The Rusty Hook
- Lakeside Sporting Goods
- C & H Sport Supply
- Mickey's Rod & Reel
- Midway Tackle & Marine
- The Rod Shop
- Bumstead's Sporting Goods, Inc.
- Stutzman's Sporting Goods
- Schneider's Bait & Tackle
- Lin Brook Rod & Reel
- Winston's Sporting Goods
- Pratt Brother's Sporting Goods
- Tackle Land
- Love's Sporting Goods
- Yellow Mart
- Jerry's Tackle Box
- Cox Bait & Tackle
- Ski & Sport
- Cash Box Sporting Goods
- The Fisherman's
- Gene's Custom Tackle
- Water World
- Encinitas Fishing Supply

- Fontana, CA
- San Bernardino, CA
- San Pedro, CA
- Lakeside, CA
- Riverside, CA
- Monterey Park, CA
- San Diego, CA
- Stanton, CA
- Ontario, CA
- Corona, CA
- Oceanside, CA
- Anaheim, CA
- Upland, CA
- Redlands, CA
- Huntington Beach, CA
- Beaumont, CA
- Indio, CA
- Redondo Beach, CA
- Imperial Beach, CA
- Riverside, CA
- Tucson, AZ
- Scottsdale, AZ
- San Jose, CA
- El Centro, CA
- Encinitas, CA

During the spring and summer months these stores are kept advised of San Diego's local fishing conditions.

## Summer Fun Cruises!

The perfect vacation: combine the excitement of a fishing trip on the new EXECUTIVE with the fun of a family vacation!

Something for everybody: fun fishing, island hiking, skiff rides, swimming, snorkeling and more!

**Catalina/Channel Islands**  
 July 30-Aug. 1 \$275.00  
 Aug. 8-Aug. 11 \$275.00  
 Sept. 3-Sept. 6 \$385.00

**Baja Islands**  
 July 9-July 14 \$515.00  
 July 19-July 23 \$400.00  
 Aug. 13-Aug. 18 \$515.00  
 Aug. 23-Aug. 27 \$400.00

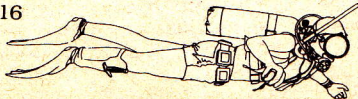
Departing from **H&M Landing**  
**RESERVE NOW!**

**Pacific Adventures Charter Service**

2445 Morena Blvd., Suite 200M  
 San Diego, CA 92110 (714) 275-4253

## DIVE the BLUE HORIZON

In local or extended charters. Full scuba diving facilities. Professional & experienced crew. Comfortable accommodations, hot showers. Open Party trips also available. Sleeps 16



For information call:  
 222-1144 or 695-3055

Derby - cont. from pg. one

Prizes in these categories include perpetual and individual trophies, a wide assortment of fishing tackle, local and long range trips and many other exciting prizes.

### DERBY RULES:

1. All H & M anglers qualify on any H & M Landing open party or charter trip taken between May 23 & Oct. 30, 1982. (Some categories remain open until Nov. 30, 1982.)
2. You must hook and land your own fish on rod and reel.
3. Your catch must be weighed in and registered by the weighmaster to qualify for competition.
4. Trolling fish do not qualify.
5. You may enter as many times as you wish.
6. There is no entry fee.
7. Not eligible are employees, families or crews of H & M Landing, donor companies or any sportfishing craft entered in the derby.
8. H & M Landing reserves the right to amend the rules as necessary and reserves the final decision in determining qualifying entries.

### REMINDER:

- Weigh in and register your fish.
- Your catch could take the trophy in one or more categories.
- Photographers will usually be on hand at the landing office. Ask if you'd like your catch photographed.

**DERBY SPONSORS:** H & M Landing's Albacore Derby & Yellowtail Too! is sponsored by and/or prizes donated by:

Bowens Sportsman Boxes - A.E. Dann - Composit Products - Scampi Lures - San Diego Bait & Taxidermy - Zuker Lures - Don Bush & Associates - Shamrock Fishing & Tackle Distributors - Russ Izor: Izorline International - California Tackle - Tady Lures - Western Hoegge-Penguin Fishing Tackle - Cox Bait & Tackle - American Wholesale Hardware - Quick Corporation - Fenwick - Personal Pack Canning - Truline - Diawa - Kencor - Lamiglass - Newell - Munson Sporting Goods - Maxima Line - Big Oak Ranch - Wild Animal Park - Spike Taft: Sea Venture - Mickey's Rod & Reel - Jerry's Tackle Box - Midway Tackle & Marine - Joe Dunn: Champ - Bears Tackle - Lakeside Sporting Goods - Rusty Hook - Sea Strike Lures - The Rod Shop - San Diego Zoo - The Millers: Finalista 100 & Mascot VI - Sea World - Handy Strap - Fishermens Supply Center - Pacific Lures - Gerber Knives - Penn Reels - Triple Fish Line - Scrounger Lures - Shelter Island Refrigeration - Magna Kold - Mr. C.B.'s Custom Tackle

Seminars - cont. from pg. six

Curcione and Gary O'Neill assist you as you experience what you've learned.

Mexican Island Fishing	3 Days
June 26-30	\$350.00
Multi-day Albacore	2 Days
July 27 - 29	\$225.00

Limited space is still available. Call H&M for details.

### SCAMPI LURES

Joe and Lori Graves, the developers and manufacturers of Scampi Lures, will host 4 local seminar trips aboard the Mascot VI this fall. The trips include instruction by the Scampi team on the proven techniques for a successful catch, rental tackle, and an assortment of Scampi Lures.

Sunday, September 19th  
 6 a.m. - 12:30 p.m.

Sunday, September 26th  
 6 a.m. & 12:30 p.m.

A special "couples and compatible singles" charter with Tom Miller's Mexico West Travel Club is scheduled August 13 - 18 aboard the EXECUTIVE. The 4 1/2 day trip is one of a series of Summer Fun Cruises offered by the EXECUTIVE this year. In addition to traditional fishing opportunities the Summer Fun Cruise offers a wide range of possibilities to suit everyone's preferences: island hiking, skiff rides, swimming, snorkeling and more. For more information write or call: Mexico West Travel Club, P.O. Box 6088, Huntington Beach, Ca. 92646. Phone: (714) 536-8081.

## Return Reply

name \_\_\_\_\_

address \_\_\_\_\_

( ) phone \_\_\_\_\_

I am most interested in:

- Local fishing
- Private Charters
- Long Range Baja Sportfishing
- Multiday Albacore Trips
- Scuba Diving
- Other \_\_\_\_\_

I am ready to sign up. Please send me a confirmation for \_\_\_ reservation(s) on trip # \_\_\_ leaving \_\_\_ for \_\_\_ days.

These trips sound perfect for a friend, please send info to: \_\_\_\_\_

For immediate fishing information call:

(714) 222-1144

(213) 626-8005

**DAILY FISH REPORT**

(714) 224-2800

(213) 724-6751

H&M Landing

### NEWSLETTER

Interested in getting accurate, up-to-date info on San Diego saltwater fishing, with no ads and no hype? How about a quarterly newsletter at the rate of \$6.00 per year plus postage? No obligation. Just let me know. Yes ( ) No ( ).

## ALBACORE DERBY, 1981 Results GRAND PRIZE WINNERS

### First Albacore

Mark Kent  
Los Alimitos, CA  
21¼ lb. Albacore — 6/19/81  
Sea Venture

### Largest Albacore

Michael Peck  
Spring Valley, CA  
47½ lb. Albacore — 8/4/81  
Mustang

### Last Albacore

Robert J. Fierfield  
Sun Valley, CA  
29 lb. Albacore — 8/23/81  
Champ

### Largest Local Yellowtail

Peter J. Mendenhall  
Summerland, CA  
25½ lb. Yellowtail — 9/13/81  
Malihini

### Largest Long-Range Yellowtail

Stuart Shaw  
Kauai, Hawaii  
38 lb. Yellowtail — 6/17/81  
Finalista

### Largest Bluefin Tuna

Curt Nicholson  
Costa Mesa, CA  
21½ lb. Bluefin Tuna — 8/16/81  
Sea Venture

### Largest Yellowfin Tuna

Paul Hozen  
Whittier, CA  
142½ lb. Yellowfin Tuna 7/28/81  
Mustang

### Largest Fish of the Derby

Gene Wells  
El Cajon, CA  
208 lb. Black Sea Bass 11/29/81  
Champ

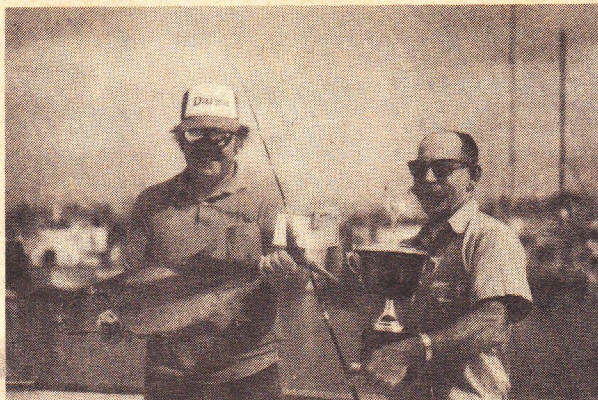
Congratulations to these trophy anglers! In addition to beautiful perpetual and individual trophies, the Grand Prize Winners also receive an assortment of fishing tackle, local and long range fishing trips, official Whopper T-shirts and other exciting prizes.

## INSIDE:

A Look at '81	pg. 1
4th Annual Albacore Derby	pg. 1
Fleet Update	pg. 1
Local Runs	pg. 2
Long Range Plans	pg. 4
Reservation Centers	pg. 5
6 Passenger Yachts	pg. 6
Custom Charters	pg. 6
Skiff Rentals	pg. 6
At-Sea-Seminars	pg. 7

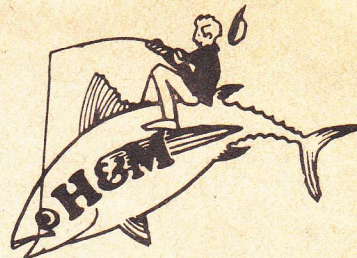
FLASH

# ALBACORE!



This is the Season!

It started on May 29th with the catch of the season's first albacore by Frank Galvery on the SEA VENTURE. And now the season is in full swing! Call now for more information: 222-1144.



## 6 Pak Fleet

*A new dimension to the H & M charter fleet!*

In December of 1981, the first six passenger yachts joined the H & M fleet on a full time basis to provide more options to the saltwater enthusiast.

The inclusion of six passenger yachts provides unique entertainment and fishing opportunities for valued clients, associates, employees, friends and families. The small group atmosphere of a yacht charter is ideal for privacy and distinctive custom charter flexibility.

Charters are available for Bay cruises, Cocktail parties, Half and Full day fishing trips, Multiday fishing and Catalina Island and Ensenada cruises. For Marlin enthusiasts, the 6 passenger yacht now provides the facilities to optimize your fishing success!

All the yachts in the H & M fleet have been selected on the basis of their mechanical safety and navigational equipment as well as the comfort and appearance of the vessel.

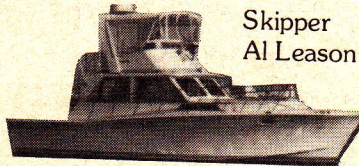
Feature accommodations include private stateroom, hot showers, color TV, large lounge areas and wet bars.

Call now for more information.

## "Half Pint"

*Fishing at its best  
for six or less!*

The "Half Pint," a 42' Uniflight, is fully rigged for serious sportfishing as well as luxury cruising. Private staterooms, hot shower and spacious galley area. Terrific bar. Deluxe Charter Service.



Skipper  
Al Leason

For reservations call:

(714) 296-1127 or (714) 222-1144

Half Pint	45' x 16'	Captain Al Leason
Interest Only	44' x 15'	Executive Marine Management
La Bonita	48' x 16'	Captain Bob Wineburg
Lucky K	45' x 15'	Executive Marine Management
Sea Bird	41' x 15'	Executive Marine Management

## Summer Fun Cruises BRING THE FAMILY TOO!

There's no reason to leave the family at home this summer when you go fishing! The EXECUTIVE has scheduled several "Summer Fun" Cruises which are perfect for the angler who has been looking for a way to combine the excitement of a saltwater fishing trip with the pleasures of a family vacation! These cruises definitely have something to interest everybody!

The "Summer Fun" Cruises are designed to take you to the picturesque islands along the southern California and Baja coast to enjoy a wide variety of activities. Each day you'll pick whatever interests you most: superb fishing (with live bait from both the EXECUTIVE and its smaller skiffs!), swimming and snorkeling in crystal clear waters, shopping and sightseeing in port, glass bottom skiff rides, easy going island hiking, beachcombing or just plain RELAXING! The EXECUTIVE's professional crew will help you get the most out of everyday.

The "Summer Fun" Cruises are available in 2½ and 3½ day lengths to Catalina Island and 3½ and 4½ day lengths to the Baja islands. Write for a complete schedule today! Prices start at \$275.00 per person and include all meals, on board accommodations and the many activities described above.

## AT-SEA SEMINARS & SPECIAL TRIPS

There really is an art to fishing. And, although luck does play its part in a good day's catch, fishing is a skill which improves with practice, patience and sometimes a little practical advice from an accomplished saltwater pro.

The popularity of "in the field" fishing seminars seems to be growing among anglers at all levels of expertise. Instruction by the pros combined with on-the-water experience can provide a comfortable introduction into new types and methods of fishing and can save you time and effort in mastering new techniques for successful fishing.

Following is a list of seminars already scheduled this season.

### FENWICK FISHING SCHOOLS

Fenwick is offering two seminars this season. Learn all the angles of saltwater fishing from Fenwick's best saltwater team. Evening seminars are complemented by on the water activity as Nick

*cont. page seven*

## SKIFF RENTALS

Beginning July 1st, a skiff rental operation starts up at H&M Landing. What better way to take advantage of San Diego's great bay fishing!

A very economical way to fish! Each skiff is Coast Guard approved to carry up to 5 passengers, but you may want to limit your trip to only a buddy or two. Live bait and bait sleds will be available. Current information on the bay's most productive fishing spots will be provided.

The rental fleet will initially consist of ten 14' aluminum Gregor skiffs with Johnson long shaft 7.5 hp outboard motors. Hourly and day rates are available.

Daily Schedule

Weekdays: 7 a.m. - 6 p.m.

Weekends: 6 a.m. - 6 p.m.

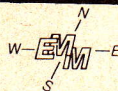
Hours may vary. Reservations accepted.

## LUXURY YACHT CHARTERS

*Exclusive Six Passenger Fleet  
Deluxe Sportfishers - Cruisers*

For more information call: (714) 232-7652

**SPORTFISHING • CRUISING • CUSTOM CHARTERS**



**EXECUTIVE  
MARINE  
MANAGEMENT, INC.**

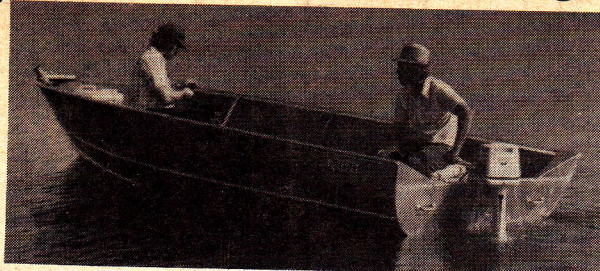
*Professional captain & crew.  
Beautiful, well-maintained vessels  
carrying the latest in equipment.  
Private staterooms, hot showers.  
Half-day, full-day and multi-day  
capabilities.*

Available  
July 1st

H&M Rentals

## SKIFF Rentals

on San Diego Bay



### 14' Gregor Aluminum Skiffs with Johnson 7.5 hp motors

- \* Ideal for Bay Fishing or Just Cruising!
- \* Very economical • By the hour • By the day
- \* U.S. Coast Guard Approved
- Bait Sleds • Live Bait • Great Bay Fishing!

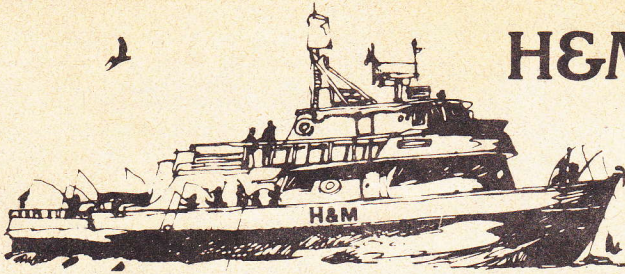
For information & reservations: 222-1144

**HOURS**  
Weekdays  
7 a.m. - 6 p.m.  
Weekends  
6 a.m. - 6 p.m.  
7 Days

## H&amp;M Landing's

## Annual

## Fishing Report



## TO OUR FRIENDS:

*The season is already underway and the early signs point to a good season ahead for us in 1982. We hope so. One thing you can be absolutely sure of is our commitment to bringing you the best fishing opportunities, trips, facilities, and service possible. You can count on personal and professional service at all levels, from the Landing staff to the captains and crews in our fleet.*

*Your fishing pleasure is our business and we enjoy being a part of your fishing plans!*

*Some exciting changes are taking place at H & M this season. New and different trip offerings give you more opportunities to enjoy fishing this season, and at inflation fighting fares.*

*Whatever type of saltwater fishing you enjoy, H & M Landing will make the time you spend fishing times to remember.*

*We look forward to hearing from you. Let us welcome you aboard!*

*The Millers*

The Millers

## ALBACORE DERBY & YELLOWTAIL TOO!

Now in its 4th year, H & M's Albacore Derby & Yellowtail Too! is officially open. Derby Dates 1982: May 23rd—Oct. 30\*. Weekly and Grand prize categories give every H & M angler a chance to win in at least one category.

### TWO WEEKLY PRIZES given for:

1. Largest fish caught on a 1/2 day trip.
2. Largest fish caught on a 3/4 or full day trip.

Weekly competition runs from Sunday to Saturday. Winners are announced each Sunday. Prizes include Whopper T-shirts, fishing tackle, fishing trips and tickets to San Diego attractions.

### 8 GRAND PRIZES given for:

1. FIRST ALBACORE
2. LARGEST ALBACORE
3. LAST ALBACORE
4. LARGEST LOCAL YELLOWTAIL \*
5. LARGEST LONG-RANGE YELLOWTAIL \*
6. LARGEST BLUEFIN TUNA \*
7. LARGEST YELLOWFIN TUNA \*
8. LARGEST FISH OVERALL \*

\* These categories remain open through Nov. 1982.

- cont. pg. 7

## A LOOK AT 1981

Well, 1981 held a lot of surprises and while it started out slowly, it just got better as the year went on.

#### Local scene:

Surface fishing at the Coronados started out slowly in the spring of '81, but by mid-June fishing picked up, and good catches of both Yellowtail and Bluefin tuna were brought back from the Islands. The bluefin, referred to as "footballs" within the fleet, weighed in at 18-20 lbs. Barracuda and Bonita were also abundant at the offshore islands.

On June 19th, 1982, the season's first Albacore was landed and the attention of local fishermen turned to the offshore waters where Albacore became the focus of daily trips. Through July and August, the local fleet concentrated its efforts on the school of migratory Albacore found 60-100 miles off San Diego. The Albacore schools remained scattered thru the summer apparently due to water conditions and local catches fluctuated all season. By late August local Albacore schools were difficult to find. The run ended early and the last Albacore of the season was taken on August 23 aboard Joe Dunn's Champ by Robert Fierfield.

The Albacore may have gone early but the season was far from over! Local Albacore schools were replaced by schools of Yellowfin and Big Eye Tuna. Tuna fishing went from good to better and remained strong into the Fall. Excellent catches of tuna weighing 100+ were reported on local trips as close as 20 miles from shore. Large schools of Yellowfin and Big Eye Tuna were found in local waters into October and November of 1981.

By mid-November, Rock Cod and bottom fishing trips into local waters began. Fishing primarily in the area of Descanso Bay and the 43 fathom spot, the Sea Spray produced large catches of Ling Cod, Cow Cod and Red Rock Cod throughout the season. The season's catches through May were excellent.

#### Long Range:

The long range fishing action started out as a big question mark that soon was answered by the time June rolled around. 4- to 5-day trips started producing good Yellowtail and Calico Bass catches at Guadalupe Island. Yellowtail landed at San Benito averaged 12 to 20 pounds with an occasional whopper at Guadalupe going to 35 pounds. One very nice Yellowtail taken by Stuart Shaw aboard the Finalista 100 on a 5-day trip in June, topped the scales at 38 pounds. The fish, taken off San Benito Island, won Stuart the grand prize in the annual H&M Landing Albacore Derby in the "Largest Long Range Yellowtail" category. Congratulations to Mr. Shaw.

8-day trips found fishing for Yellowtail and Black Sea Bass successful in the Spring off Uncle Sam Bank and in San Pablo Bay. As June rolled around, thoughts of Albacore began to run

- cont. pg. 2

## H &amp; M

## FLEET UPDATE

We have more to report on in this area everyday! New boats joining the fleet and major remodeling projects to modernize others have given the H & M charter fleet a whole new look.

We welcome this year the **BLUE HORIZON** just down from Washington state. Skipped by Captains John Law and Glenn Hillegas, the 57' charter boat is San Diego's tastiest, cruising at 18-21 knots. Diving trips are also available.

The new boat everyone is talking about, the 95' sportfisher **EXECUTIVE** joins the H & M fleet in June. Skipped by Captain Dave McIntyre, the **EXECUTIVE** will offer several new type trips for the fishing enthusiast. (See box below.)

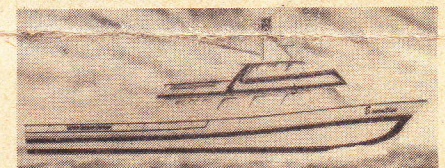
A whole fleet of six passenger yachts have teamed up with H & M this season to cater to small private charter groups. (See separate article pg. 6.)

Inside the fleet, a major remodeling project has changed the face of the charter boat **GALLILEAN**. Among the additions are a large modern galley, hot shower, and extra head. Captain John Houlihan reports that he and his crew are ready for two and three day trips in addition to local one day runs.

The charter boat **HORIZON** owned and operated by Skipper Lou Grivetto has also done major remodeling, and is fully prepared for multiday as well as local trips. Among the additions the **HORIZON** has added capabilities

- cont. pg. 3

## Latest Addition . . . THE EXECUTIVE



At least a little piece of boat building history has been made this year at San Diego's Sackett & Pendlebury Custom Yacht Shipyard where the **EXECUTIVE** has been under construction. Scheduled to be in the water and ready for trips in July, the **EXECUTIVE** is the first long range sportfisher designed with more than fishing in mind.

Over the years, San Diego's versatile sportfishing fleet has found a variety of uses for its charter boats, but all were originally built with one primary aim in mind: to catch fish. Marcy Nunes had another idea in mind when he had the **EXECUTIVE** designed and built.

The boat designers, Bob Sackett and Fred Pendlebury put together a superb long range

cont. pg. 6

## LOCAL RUNS

### Summer season

Big changes in local open party trips now offer more choices on more trips everyday.

**Lower weekday fares** help you fight inflation while fishing. Save up to \$5.00 on open party fares Monday through Friday.

**Half Day Trips** to the Point Loma Kelp Beds depart twice daily at 6 am and 12:30 pm (and 5:30 pm twilight trips June-September) aboard the deluxe 85' Mascot VI. Best known as H & M's long-range sportfisher, the Mascot VI brings the high quality of long range service to our local fishermen!

**3/4 Day Trips** to the Coronado Islands depart daily at 7 am. This new run has enjoyed great popularity since it began in May. The fare is less than a full day trip. The 7 am departure lets you sleep in and still get out for a day of great fishing!

**Full Day Trips to the Coronado Islands** depart daily at 3 am aboard both Manny Silva's Malihini and Chuck Taft's Sea Spray. For the early morning bite, fishermen get up for this one!

**Full Day Trips to the Albacore grounds** depart daily between 10 and 11 pm in season. Trips expected to start mid June. Conditions look great for local trips. For albacore fishing there is no better place than San Diego!

81' - cont. from pg. one

through the minds of anglers and fleet crews as well. On June 19th, Captain Spike Taft of the Sea Venture stopped to troll a likely-looking area during a 5-day fishing trip to Guadalupe Island.

## MALIHINI

80' x 20'

Captain Manny Silva

Very experienced captain & courteous crew.

No crew fishing!

Full galley service

Comfortable Berths

Coronado Islands & Albacore

Open Party Trips All Year

For reservations call:

**222-1144**

The result was the first Albacore of the season. The fish was landed by Mark Kent of Los Alamitos. This was the 6th year in a row that the first Albacore of the season was caught by an H&M boat, and the third year in a row that a member of the Taft family was the captain of the season's first Albacore find. The Sea Venture rounded out the Guadalupe trip, sacking over 250 Yellowtail, 600-plus Calico Bass, and 25 of the first Albacore of the season.

Other long-range trips early in the summer took advantage of combination Albacore and off-shore island fishing for Yellowtail and Black Sea Bass. The Mascot VI trip in mid-June returned with 550 Yellowtail, 41 Albacore, 2 Yellowfin Tuna, 27 Black Sea Bass, 1 Grouper and over 500 assorted species.

By early July, the multi-day trips of 2- to 4-days

were zeroing in on the "Albies." Overall, the season turned out to be a good one, from the end of June to the third week in August. There were two prime fishing areas to be found. One at 40 to 150 miles off shore, and the other at about 300 miles. Good to excellent fish counts were the rule on the multiday trips.

As late August approached, the schools of Albacore were replaced by Yellowfin and Big Eye Tuna so that fishing remained good throughout the year. The Tuna ran from 15 to over 200 pounds and 4-day trips fished San Martin, San Carlos and Geronimo September and October with good Yellowtail and Yellowfin Tuna bites, with the Yellowfins going from 20 pounders to over 100 pounds. 8-day trips in October and November at the Thetis Bank and Alijos Rocks resulted in some really good catches of Yellowfin Tuna and Wahoo. Wahoo were a little late coming in last year, but did show for a fall bite. Dorado fishing never really did come on strong during the season, but good Tuna catches and other species hitting well made up for the Dorado. Joe Dunn's Champ produced 570 Yellowtail during a 10-day trip. On the same trip, larger Yellowfin Tuna were taken at Alijos Rock and under kelp patties. One of those kelp patty stops lasted six hours and scored Yellowfin Tuna topping 60 pounds. 27 Black Sea Bass were also bagged on the same trip with the largest going over 208 pounds. That monster was nailed by Gene Wills. Gene took the grand prize for the largest fish caught during the season in the annual derby.

In all, a pretty good season and fish count were had in 1981. This year is already off to a hot start. Season has just started and we are having some of the best local surface fishing in years. Yellowtail are back at the Coronados and the Barracuda bite is good. The kelp beds and local areas are producing good to excellent bites and bottom fish. Bass and Barracuda have been caught in good number with an occasional Yellowtail making its way into the catch. The first Albacore of the 1982 season was again landed by an H&M boat. Frank Galvery of West Covina was the lucky angler. The 15 pound prize was caught mid-morning on Saturday, May 29th, on, you may have already guessed it, Spike Taft's Sea Venture. Although the fish was relatively small, it is considered a good sign for a long and productive Albacore season. It was also one of the earlier starts of the Albacore season. Come join us for the fishing this year at H&M. We have a full schedule of local and long range trips planned throughout the year, including half-day, twilight, 3/4 and full day trips. This will be the season to remember!

## DELUXE 1/2 DAY TRIPS MASCOT VI

85' Sportfisher with "Long Range" comfort.

The modern facilities & first-class service on the Mascot VI set this operation apart from the rest. Lots of deck space. Large sundeck area. Professional crewmen. Large modern galley serving great food at low prices including deli sandwiches and draft beer.

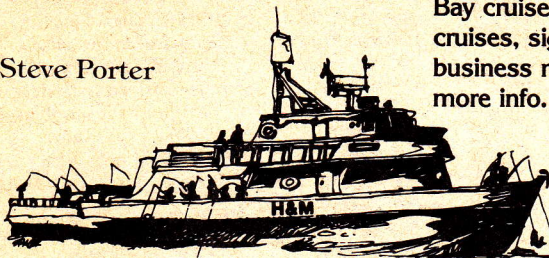
Daily Departures: 6 a.m., 12:30 p.m. & 5:30 p.m.

SUMMER  
SCHEDULE

Fare:	Adults	Juniors
Weekdays	\$14	\$10
Weekends & Holidays	\$16	\$12

Special charters available. Bay cruises, cocktail cruises, sightseeing & business meetings. Call for more info.

Captain Steve Porter



Call for Reservations: (714) 222-1144

Captain Chuck Taft's

## SEA SPRAY

70' x 20'

Sleeps 40

- \* "Limited" open party trips
- \* Full Galley
- \* Comfortable Berths
- \* Latest in Electronics
- \* Experienced Crew
- \* Albacore & Coronado Is.

For reservations call:

**222-1144**

**Captain Bob Wood's  
Charter Boat ALICIA**  
46' x 15'

The Alicia is equipped to make your sportfishing adventure as successful and comfortable as possible. We are set up to accommodate the smaller groups with all the facilities of larger boats. Equipped with modern electronics and an experienced, courteous and knowledgeable crew.



Sleeps  
16

For reservations call:  
(714) 222-1144 - (714) 449-8635

**BLUE HORIZON** 52 ft. x 16 ft.

Captain Glenn Hillegas  
Captain John Law

San Diego's fastest charter boat!  
Cruises at 18-20 knots. Comfortable accommodations & hot shower.  
Experienced & friendly crew.  
No crew fishing!  
Prime dates still available.



Sleeps 16

For more info. & reservations  
222-1144 or 695-3055

Fleet Update - cont. from pg. one  
for scuba. Fishing will be the emphasis during the summer, fall and winter months and diving will be emphasized in spring.

The ALICIA, owned and operated by Captain Bob Woods has just completed spring refurbishment and is ready to go. Four crew members each trip are sure to provide attentive service to its 14 passenger charter groups this season.

Captain Joe Dunn's CHAMP returns to the private charter fleet after its season of open party long range trips. Built for multiday as well as local trips the CHAMP provides spacious and modern accommodations for very comfortable fishing. Captain Dunn, well known and experienced fisherman says that conditions look excellent for the upcoming season.

The SEA VENTURE also returns to the private charter fleet after a schedule of mini long range trips. Captain Spike Taft, an experienced and aggressive fisherman, goes to great lengths to find the fish he's after. And it pays off! The SEA VENTURE brought in the season's first sport-caught albacore on May 29th, while on a 5 day trip to Guadalupe Island.

As in past years the INDIAN, Skipped by Bud Lovette will join the fleet for the summer season. Also returning to H & M for the summer is

the MUSTANG now owned and operated by Captain Danny Kadota.

In addition to the traditional schedule of fishing trips, boats in the H & M private charter fleet now offer a wide range of possibilities to those who want to develop "special custom charter" trips. During the prime local fishing season there may not be as much flexibility in customized charter itineraries as there is during the rest of the year, but we are willing to work with you to design the trip that best fits the interests of your group. Call the Landing for more information.

Executive - cont. from pg. one

vessel that is outfitted like a custom yacht. Passenger comfort was kept in mind during all phases of design. The result will be a sportfisher which is very enjoyable to be aboard.

Trips aboard the 95' x 28' EXECUTIVE are limited to 38 passengers, all accommodated in air conditioned cabins with no more than four berths (extra wide when possible!) Other special features include lots of storage, cedar lined hanging lockers and 5 heads and 4 showers located centrally in both bow and stern stateroom compartments as well as on the main deck.

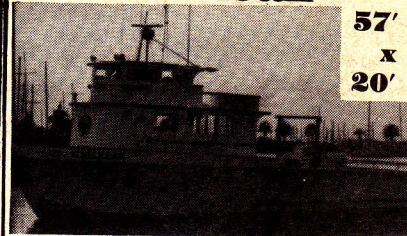
The galley is spacious to say the least and is designed to make meal service a real treat. The booth layout is designed to accommodate everyone in one seating. A large salad bar and wet bar complement the galley fare. After meals the galley converts into a comfortable lounge, complete with video cassette recorder and tape library.

The vessel's comfortable accommodations, innovative features and superb craftsmanship will make discovering Baja by sea appealing to an ever growing number of adventurers . . .

Trips are available on an "open party" (individual bookings) or groups charter basis. Custom trip itineraries are available. Within the schedule of available trips are local full day trips, Baja Long Range Sportfishing, including San Diego and Cabo San Lucas departures, and the new trip offerings — Summer Fun Cruises. (See article pg. 6)

For more information on the EXECUTIVE which will operate from H & M Landing, call H & M Landing at (714) 222-1144 or Pacific Adventure Charter Service at (714) 275-4253.

**"Gallilean"**



57'  
x  
20'

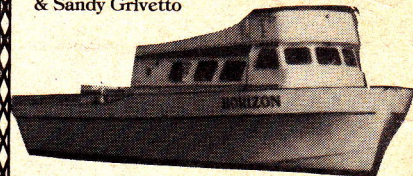
Captains John & Char Houlihan  
Sleeps 26

Customer service is our greatest concern! Experienced captain & crew. No crew fishing. Large, remodeled galley, 2 heads, hot shower. Local & multiday trips. Call now for dates.

For reservations call:  
(714) 465-8469 or  
(714) 222-1144

**"HORIZON"** 65' x 22'

Skipper Lou Grivetto  
& Sandy Grivetto



Spacious, sleek and comfortable. Large modern galley. Hot showers & roomy sleeping accommodations. Very experienced & knowledgeable crew. No crew fishing! Local & multi-day trips. Scuba diving also available. Call now for dates.

For reservations call:  
(714) 277-7823 or (714) 222-1144

**THE H & M FLEET**

ALICIA	46' x 15'	Sleeps 16
BLUE HORIZON	53' x 17'	Sleeps 16
CHAMP	75' x 25'	Sleeps 42
EXECUTIVE	95' x 28'	Sleeps 40
FINALISTA 100	95' x 24'	Sleeps 57
GALLILEAN	57' x 20'	Sleeps 34
HORIZON	65' x 22'	Sleeps 48
INDIAN	62' x 20'	Sleeps 28
KONA PRINCESS	65' x 20'	Sleeps 36
MALIHINI	80' x 20'	Sleeps 61
MASCOT VI	85' x 24'	Sleeps 65
MUSTANG	65' x 20'	Sleeps 50
NEW DAWN	65' x 18'	Sleeps 30
NEW RED RADER	65' x 20'	Sleeps 25
SEA SPRAY	70' x 20'	Sleeps 40
SEA VENTURE	70' x 24'	Sleeps 50

Captain Bob Woods  
Captain Glenn Hillegas  
Captain Joe Dunn/ Kevin Ward  
Captain Dave McIntyre  
Captain John Pratt  
Captain John Houlihan  
Captain Lou Grivetto  
Captain Bud Lovette  
Captain Glen Couch  
Captain Manny Silva  
Captain Steve Porter  
Captain Danny Kodota  
Captain Robby Robinson  
Captain Jack Rader  
Captain Chuck Taft  
Captain Spike Taft/ Kenny Baruch

**6 PASSENGER FLEET**

HALF PINT	45' x 16'	Uniflight
INTEREST ONLY	45' x 14'	Hatteras
LA BONITA	48' x 16'	Knight & Canver
LUCKY K	44' x 15'	Pacifica
SEA BIRD	41' x 15'	Pacifica

Captain Al Leason  
Executive Marine Management  
Captain Bob Wineburg  
Executive Marine Management  
Executive Marine Management

## Long Range Plans '82

Spring trips of 5 and 8 days in length are scheduled on several boats in the long range fleet this season. Heading out for northern offshore islands, Guadalupe, San Martin or San Benito, five day trips are likely to produce excellent mixed catches of yellowtail and albacore. An early indication of a rich season was Spike Taft's trip to Guadalupe on May 28th which picked up the season's first albacore 130 miles from San Diego. But then again, trips enroute to Guadalupe Island are known for producing surprising catches on the troll!

There is little doubt right now among San Diego's fleet that a good, if not excellent, albacore season is ahead for us this summer. Multiday trips of 3 and 4 days will target in on the migratory schools. The longer trips of up to 5 days may combine some island fishing with albacore fishing depending on fishing conditions and productivity.

The forecast by local researchers indicate good overall conditions for a long and nearby albacore bite. Multiday trips during this type of season really extend actual fishing time by finding the best area and staying with it to take advantage of the early morning and late evening bites. The FINALISTA 100 and EXECUTIVE have full

### DON'T MISS THE BOAT!

A 50% deposit will confirm your reservation on any trip throughout the season. If you wish, you can make a deposit on your Mastercard or Visa by phone at the time you make your reservations.



schedules of multiday albacore trips available. Trips are filling fast. Call early to reserve the trip dates you prefer most.

In September and October, longer trips are scheduled to fish the island and coastal banks of Baja. Yellowfin tuna, wahoo and dolphin are among the species to be targeted.

Mini long range trips of 4-5 days in length are scheduled aboard the CHAMP and SEA VENTURE to fish the northern Baja islands. Yellowtail and some tuna could be expected. These trips will be available into the winter months.

In November, the EXECUTIVE will offer a special Revilla Gigedo Islands trip leaving from Cabo San Lucas. This 11 day trip will provide access to the rich fishing grounds of Socorro, Clarion and San Benedicto Islands without the long run down and back previously necessary on a 16 day trip from San Diego.

All in all, the season looks great! We hope you'll join us!

### CUSTOM CHARTERS

Have it your way! Just because traditionally scheduled fishing trips have always left at a certain hour, there is nothing to stop you from chartering a boat for a trip which fits your schedule and fishing or cruising preferences. Custom charters from 3 hours to 10 days or more can be arranged for almost any size group.

Scuba Diving trips are available on two boats in the H&M fleet, the BLUE HORIZON and THE HORIZON. Most trips are available on a charter basis. Some "open party" dates may become available. Call H&M Landing if you are interested in learning more about diving opportunities.

## SEA VENTURE

When experience counts, the Sea Venture finds the fish!

Captains Spike Taft and Kenny Baruch are aggressive fishermen who know what it takes to catch fish.

#### The Sea Venture Features

- \* Deluxe galley lounge area,
- \* Roomy sleeping accommodations, (24 double bunks)
- \* Hot showers and 4 Heads
- \* Latest in electronic navigation equipment.
- \* Refrigerated spray brine fish hold.
- \* Long range capabilities including the West coast of Baja.

#### LONG RANGE SCHEDULE

Trip #	Dates	# Days
SV 6	6/25 - 6/30	5 Days
SV 7	9/3 - 9/6	3 Days
SV 8	9/10 - 9/14	4 Days
SV 9	9/17 - 9/22	5 Days
SV 10	10/1 - 10/6	5 Days
SV 11	10/8 - 10/12	4 Days
SV 12	10/15 - 10/20	5 Days
SV 13	10/22 - 10/27	5 Days
SV 14	11/12 - 11/27	5 Days
SV 15	12/10 - 12/15	5 Days

Also available for private charters, local and long range. Call now for prime dates.

For more info. & reservations  
(714) 222-1144 or  
(714) 548-4086

## Get Ready for THE EXECUTIVE!

Built with the care of a custom yacht, the deluxe 95 x 28 foot EXECUTIVE is ready to provide you with the finest in albacore and long range fishing trips!

Have a look at The EXECUTIVE's features:

- 13 comfortable air conditioned and fully carpeted cabins • A roomy salon that seats more than 30 in plush booths • Complete cocktail bar, salad bar and modern galley
- Fantastic meals including afternoon hors d'oeuvres and fresh seafood when available • Latest in electronics • GIANT live bait tank • 20 ton refrigerated fish hold
- Four sturdy skiffs • Experienced captain and crew

### Baja Long Range 1982 Schedule

Summer			Aug. 23 - Aug. 27			4 days			\$ 495.00		
July 5 - July 8	3 days	\$ 375.00	Aug. 28 - Aug. 31	3 days	\$ 375.00						
July 9 - July 13	4 days	\$ 495.00									
July 14 - July 18	4 days	\$ 495.00									
July 19 - July 23	4 days	\$ 495.00									
July 23 - July 26	3 days	\$ 375.00									
Aug. 2 - Aug. 5	3 days	\$ 375.00									
Aug. 8 - Aug. 11	3 days	\$ 375.00									
Aug. 13 - Aug. 17	4 days	\$ 495.00									
Aug. 19 - Aug. 22	3 days	\$ 375.00									

NO FUEL SURCHARGE

### "Summer Fun" Cruises

Our "Summer Fun" Cruises are the perfect family vacation! Combine exciting saltwater fishing (with live bait, from The EXECUTIVE or skiffs!) with a leisurely, fun filled cruise to Baja Islands or Catalina. Call for brochure today!

Call or write for more information or reservations today:

Operating from  
H&M LANDING

Pacific Adventures  
Charter Service

2445 Morena Blvd. Suite 200 • San Diego, California 92110

RESERVE NOW!  
(714) 275-4253

FOR INFORMATION & RESERVATIONS:

(714) 222-1144  
(213) 626-8005

## The "FINALISTA 100"

95' x 24'

The FINALISTA 100 enjoys a superb reputation as  
★ Excellent and professional crew service! ★ No c  
★ Comfortable stateroom accommodations! ★ Far  
★ Large spray brine fishhold! ★ Latest in electronic  
★ And, a record of successful and productive long  
Call for information and reservations.

Full Long-Range Schedule  
Listed on Following Pages.

1 day Albacore trips will be available  
Sept. - Oct. aboard the Finalista 100  
from Virg's in Morro Bay.



For more information &